



# 9000 F



PERFECT FOR HIGH VOLUME  
FILTER COFFEE SERVICE



The new WMF 9000 F automatic filter coffee machine ensures first-class moments of pleasure for the mass catering sector. Despite its slim dimensions, the powerhouse impresses with an output of up to 100 litres per hour, and the boiler also guarantees that coffee lovers never have to wait long for their beverages.



Patented brewer design doesn't require paper filter or manual handling



Automated cleaning process with almost no manual intervention



Hot water and coffee dispense from front of machine for Jug service



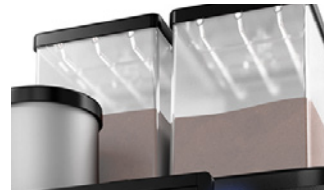
A 10" touch screen with animations gives new levels of easy user control



Brew directly into 20L urns on trolleys for large scale coffee service



WMF CoffeeConnect is built in and allows you to monitor your 9000F



Dual hoppers give option of 2 coffees or double capacity



Waste system strains out coffee from drainage for ease of disposal

## UNIT SPECIFICATIONS

Nominal output	13.5 kW
Max. hourly output	Approx. 72 / 110 liters
Coffee bean hooper(s)	Approx. 2.5 kg per filling
Mains power connection	3/N/PE ~ 450V ~ 50/60Hz
Water connection	CWS - 3/8" with isolation
Dimensions (width / height* / depth)	450mm / 782mm / 605mm
Empty weight, depending on fittings	Approx. 65kg
Continuous sound pressure level (LpA)**	< 70 dB (A)

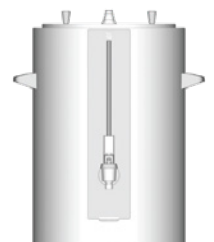
\* Height with 4 mm feet and with KMP-lid, no lock. \*\* The A-weighted sound pressure level LpA (slow) and LpA (impulse) in the operating personnel's workplace is always under 70 dB in every mode of operation (A).



FRONT



SIDE



URN

**wmfcoffee.co.nz**  
**+64 21 402 182**